

Lauda Music

www.laudamus.com.au

Answering the Call

Vocal/Guitar Version

Chris deSilva

Liturgical notes: This song was written with the Rite of Christian Initiation of Adults (RCIA) in mind. It is quite long and does not have to be sung in its entirety. For example, the Final Refrain could be sung by itself as the catechumens are leaving the church after being dismissed from the celebration of the Eucharist at the end of the Liturgy of the Word. The song does not make any explicit reference to the RCIA and could be used as a song about discipleship in general.

Musical notes: I have included a trumpet part for the Refrain and the Final Refrain in the Accompaniment. It does not need to be played each time the Refrain is sung. On my recording, the trumpet is heard only at the beginning and on the Final Refrain.

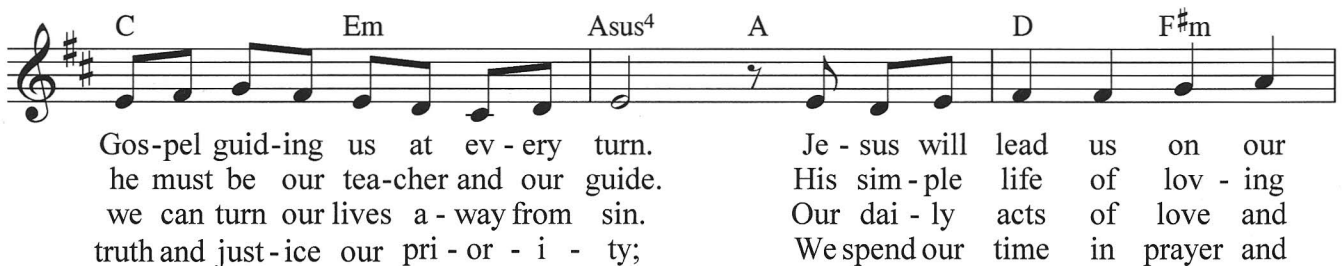
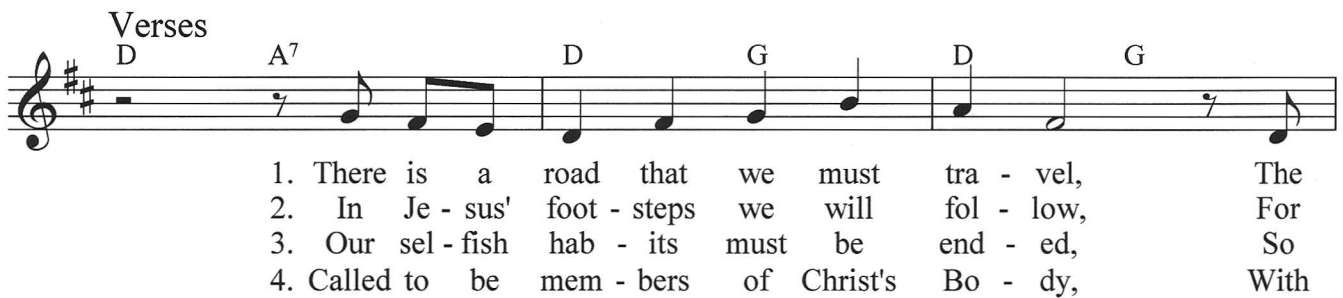
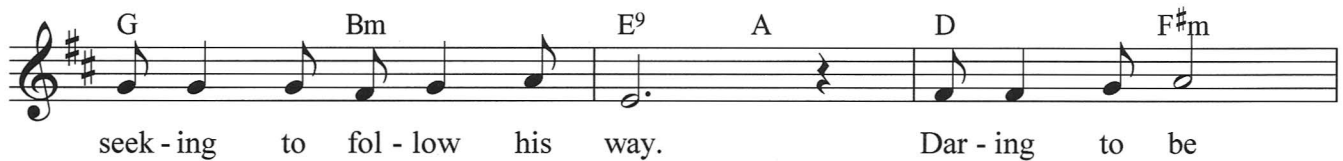
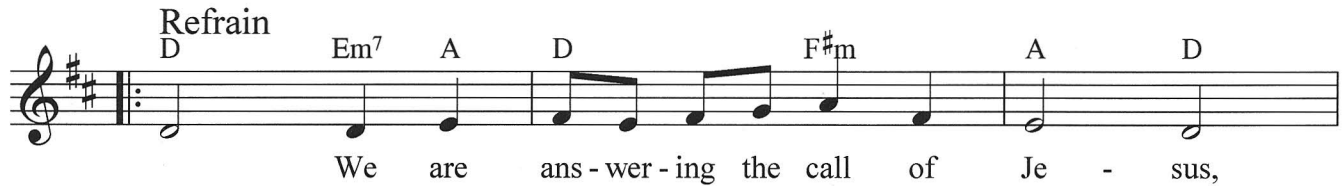
Text: I am grateful to Karen Hart, Perth Archdiocese RCIA Coordinator for a number of suggestions which I used in writing the first verse.

Copyright © 2012 Christopher J. S. deSilva. All rights reserved.

This music was downloaded from the *Lauda Music* website. It may be reproduced free of charge for use by music ministers in parishes, schools and religious communities. It may not be offered for sale or reproduced for commercial purposes. The lyrics may be reproduced for use by the assembly under the *Annual Restricted Copy Licence* of Word of Life International.

Answering the Call

Chris deSilva



jour - ney; The way a - head he helps us to dis - cern.
 ser - vice In - spi - res us to put an end to pride.
 kind - ness Are out - ward signs of chang - es deep with - in.
 wit - ness Sup - por - ted by our par - ish fam - i - ly.

Final Refrain

The musical notation is on a single staff in G major (one sharp). The key signature is G major. The time signature is 4/4. The melody consists of the following notes: a whole rest (D), a half note (E), a half note (A), a half note (B), a half note (C), a half note (D), a half note (E), a half note (F#), a half note (G), a half note (A), and a half note (B). The lyrics are: We are ans - wer - ing the call of Je - sus,.

D Em⁷ A D F#m A D

We are ans - wer - ing the call of Je - sus,